

# herbst safe

Quick Start Guide



## Contents

- Introduction – Page 2
- Connecting Herbst Pocket HDD to your computer - Page 3 & 4
- Installing Herbst Backup Scheduler - Page 5
- Obtaining and initiating activation licence – Page 6
- Herbst Remote Storage – Page 6
- Disconnecting Herbst Pocket HDD - Page 7
- Troubleshooting - Page 8

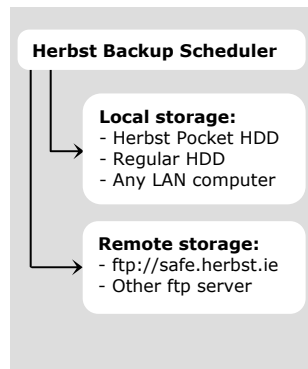


## Introduction

**Herbst Safe** is a universal solution with a user-friendly interface making you confident that you will not lose your sensitive information.

Included in **Herbst Safe** are:

- **Herbst Backup Scheduler** – a programme for automatic back-up of your data
- **Herbst Pocket HDD** – a small-sized high-capacity portable external hard drive
- **Herbst Remote Storage** – an even safer place for your backed-up data on a Herbst FTP server



This Quick Start Guide gives you full instructions on how you can start using Herbst Safe straight away. For more information refer to the "Help" icon of the programme.

## Connecting Herbst Pocket HDD to your computer

**Note.** You will not be able to use Herbst Pocket HDD with Windows NT, as it does not support USB devices.

**However:** You can still install Herbst Backup Scheduler and backup your data to Herbst Pocket HDD connected to any other LAN computer.

Make sure you know what operational system you are using on your computer. If you are not sure, contact your computer dealer.

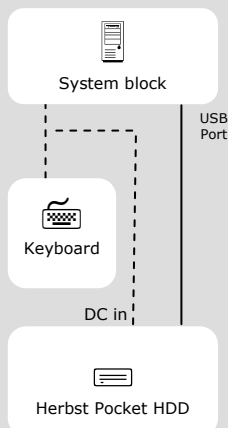
### Windows ME/2000/XP

Herbst Pocket HDD does not need any additional drivers. All you have to do is connect Herbst Pocket HDD to any available USB port of your computer, using the supplied USB cable. The computer will recognize Herbst Pocket HDD automatically.

Despite the fact that some computers can work with Herbst Pocket HDD without additional power supply, for failure-free work we recommend using the supplied keyboard DC adapter.


The steps below describe connecting Herbst Pocket HDD to your computer via the supplied keyboard DC adaptor

- Disconnect the keyboard
- Plug the keyboard DC adapter in the keyboard PS/2 Connector
- Connect the keyboard and Herbst Pocket HDD to the keyboard DC Adapter
- Plug Herbst Pocket HDD to the USB port using the supplied USB cable





The computer will recognize the new device. You will see a "New Hardware Found" window on the screen.

If the connection has been done successfully, an icon like this  appears in the system tray.

### Windows 98

Before connecting Herbst Pocket HDD to your computer, install Herbst Pocket HDD drivers supplied on the installation CD.

Load the supplied CD in the CD drive of your computer. After you see "Herbst Safe" window on the screen, click "Herbst Pocket HDD Drivers" on the left-hand pane. The drivers will be installed automatically.



Next time the Herbst Pocket HDD is plugged into the same computer, it will be recognized automatically. You will not have to install the driver again.

For further installation steps please refer to the section "Windows ME/2000/XP" (page 3).




## Installing Herbst Backup Scheduler

After you have connected Herbst Pocket HDD successfully, follow the steps below to install Herbst Backup Scheduler correctly.

- Insert the supplied CD into the CD drive. A "Herbst Safe" window will appear on the screen of your computer.



- Click "Herbst Backup Scheduler" on the left-hand pane.
- Then follow the on-screen steps to continue installing the programme.

Every time you run the programme, you will see the programme icon  in the system tray.



**Note.** You can start the programme manually from the Start -> Programs -> Herbst Backup Scheduler 1

The programme will be launched automatically every time you start up your computer.

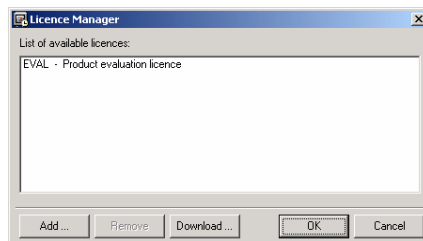


## Obtaining and initiating activation licence

After the installation of Herbst Backup Scheduler, you will have evaluation licence. You will be able to use all options except scheduling. Manual back up can be done by clicking the "Backup Now" button on the toolbar.

Scheduling can be enabled by obtaining activation licence. Please, contact Herbst Customer Support to get activation licence.

To initiate activation licence, right-click the main window of the programme and select "Licence". A "Licence Manager" window will appear on the screen.



To enter the licence number manually, click the "Add" button. Then follow the steps to proceed.

To download the licence number from the Internet, click "Download" button and then enter customer login and password in the dialogue box and click "OK".

Now scheduling is enabled.

### **Customer Support:**

*Herbst Manufacturing*

*Kilpoole Hill,*

*Wicklow, Ireland*

*Phone:*

*+353 (0) 404 67164*

*Fax:*

*+353 (0) 404 67363*

*E-mail:*

*herbst@herbst.ie*

*Web:*

*www.herbst.ie*



## Herbst Remote Storage

Herbst Remote Storage allows your backups to be sent to Herbst FTP servers located in the European data centre. These servers are also backed-up to ensure safety.




**Customer Support:**  
*Herbst Manufacturing  
Kilpoole Hill,  
Wicklow, Ireland  
Phone:  
+353 (0) 404 67164  
Fax:  
+353 (0) 404 67363  
E-mail:  
herbst@herbst.ie  
Web:  
www.herbst.ie*

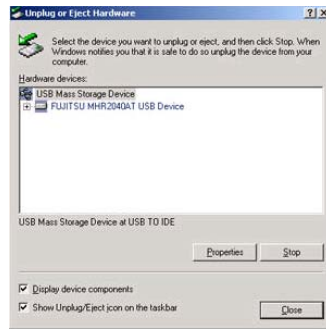
Remote Storage on a Herbst FTP server is available for additional monthly payment. Contact Herbst Customer Support for more information.



## Disconnecting Herbst Pocket HDD

Follow the steps below to remove Herbst Pocket HDD safely.

- Double-click the green arrow icon  in the system tray. A dialog box will appear on the screen.




- Select "USB Mass Storage Device" and click "Stop".
- Unplug the keyboard DC Adapter.

Now you can disconnect Herbst Pocket HDD from the USB port.



## Troubleshooting

**- I can see the icon  in the system tray, but I still cannot find my Herbst Pocket HDD.**

*(For Windows 98 only)*

- o Make sure you have installed all the hardware and software correctly and follow the steps below to find your HDD: Start -> Settings -> Control Panel -> System -> Device Manager -> Disk Drivers -> select Herbst Pocket HDD -> right-click and choose Properties -> Settings tab -> Removable -> Choose a letter to assign to the driver -> click OK.

*(For Windows 98/ME)*

- o In case your Herbst Pocket HDD had been previously formatted with NTFS file system:
  - format Herbst Pocket HDD with FAT32 file system
  - install other operational system (Windows 2000/XP) on your computer.

**- I cannot find Herbst Pocket HDD at all.**

- o Additional power is needed when Herbst Pocket HDD consumes power over 550mA (Check the label on your Herbst Pocket HDD). Connect Herbst Pocket HDD using the supplied keyboard DC adaptor. See the scheme on page 3.

**Note:** When you format your HDD, all information stored on it will be lost

**Customer Support:**  
Herbst Manufacturing  
Kilpoole Hill,  
Wicklow, Ireland  
Phone:  
+353 (0) 404 67164  
Fax:  
+353 (0) 404 67363  
Email:  
herbst@herbst.ie  
Web:  
www.herbst.ie



Copyright © Herbst Manufacturing Ltd  
2003

*Kilpoole Hill,  
Wicklow, Ireland  
Phone: +353 (0) 404 67164  
Fax: +353 (0) 404 67363  
E-mail: [herbst@herbst.ie](mailto:herbst@herbst.ie)  
Web: [www.herbst.ie](http://www.herbst.ie)*